

Municipal Intermediate Duration

By applying our robust credit research and tactical management style within the universe of investment grade municipal bonds we aim to maximize the after-tax total return by capitalizing on the inefficiencies in the 1-15 year maturity range.

Strategy Focus

- Total Return Driven
- Maximize After-Tax Return with 15 Year Maturity Constraint
- Deliver Tax-Free Income
- Geographically Diversified

Key Stats

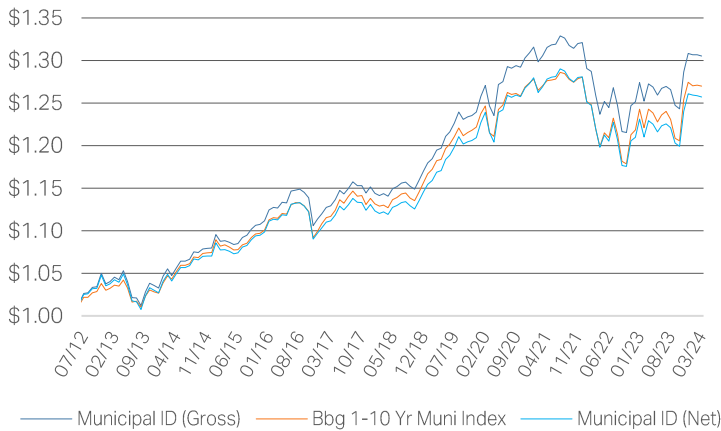
\$17
Strategy Assets (MM)

3.98
Effective Duration (Years)

6.43
Average Time to Maturity

AA
Average Credit Rating

Growth of \$1 Million

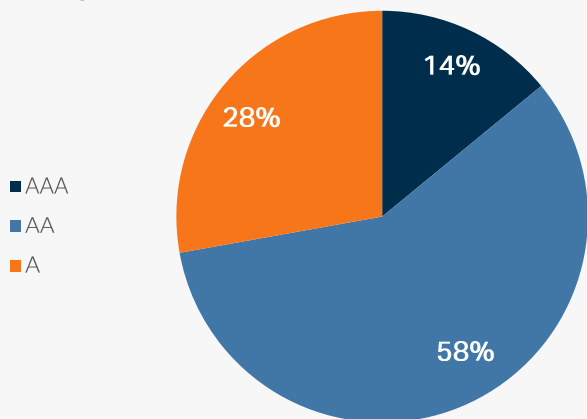


Annualized Return

	QTD	YTD	1 YR	3 YR	5 YR	7 YR	*Since inception
Muni Intermediate Duration – Gross	-0.24%	-0.24%	2.57%	-0.02%	1.78%	2.09%	2.24%
Bloomberg 1-10 Yr. Muni Index	-0.37%	-0.37%	2.18%	-0.01%	1.44%	1.85%	2.01%
Muni Intermediate Duration Net	-0.32%	-0.32%	2.27%	-0.32%	1.47%	1.77%	1.93%

*Inception Date 03/31/12
Returns less than one year are not annualized. Net of fee performance is net of actual fee. Past performance is not a guarantee of future performance.

Ratings Distribution



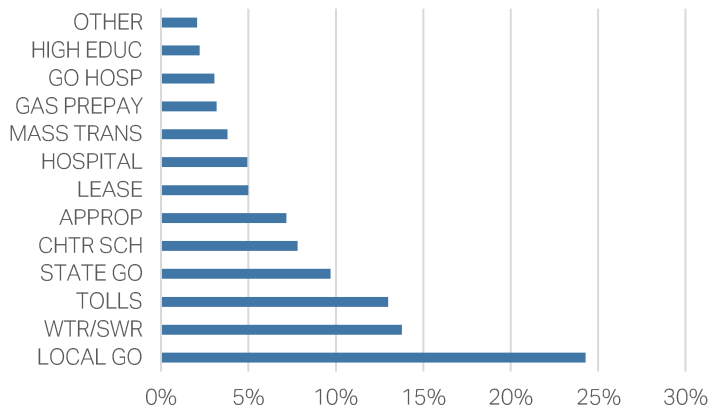
The Ratings Distributions are derived by using a weighted average of all credit ratings in the portfolio. The average is calculated by CIM using NRSRO ratings.

Portfolio Characteristics

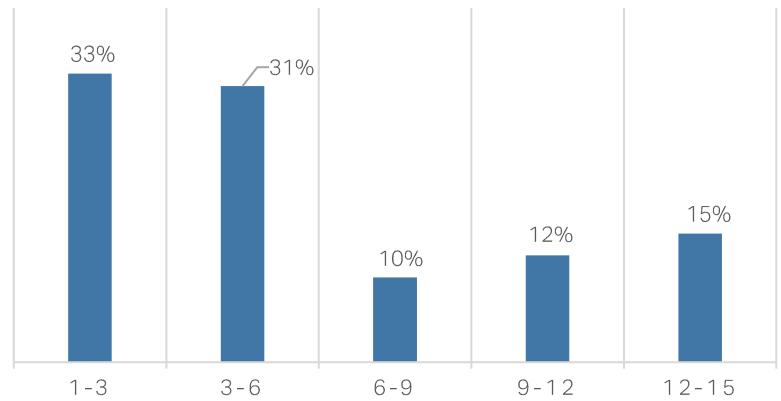
Current Yield	4.52%
Yield to Maturity	3.57%
Yield to Worst	3.20%
Taxable Equivalent Yield To Worst*	5.41%

*The taxable equivalent yield represents the yield that must be earned on a fully taxable investment in order to equal the tax-exempt yield of the particular composite. The taxable equivalent yield is calculated by dividing the tax-exempt yield by 1- the maximum federal income tax rate of 40.8% (37% federal + 3.8% Medicare tax).

Sector Distribution



Years to Maturity Distribution



For the Period Ending	Gross of Fees (%)	Net of CIM Fees (%)	Barc 1-10 Yr Muni Index (%)	Number of Accounts	Composite	Barc 1-10 Yr Muni Index	Composite Dispersion (%)	Composite Assets (Millions)	Total Firm Assets (Millions)
					3 Yr Std Dev (%)				
2022	-5.26	-5.54	-4.84	7	4.39	4.38	0.96	16	1689
2021	0.92	0.62	0.54	7	2.89	2.75	0.30	17	1404
2020	5.60	5.26	4.23	6	2.80	2.76	0.50	17	1048
2019	5.91	5.56	5.63	8	1.81	1.88	0.71	22	748
2018	1.65	1.32	1.64	8	2.50	2.51	0.18	20	550
2017	3.37	3.05	3.48	13	2.53	2.50	0.39	34	440
2016	0.21	-0.39	-0.10	11	2.59	2.42	0.36	24	373
2015	2.95	2.34	2.45	13	2.47	2.11	0.40	26	283
2014	4.62	3.99	4.66	15	-	-	0.70	29	276
2013	-0.46	-1.06	-0.32	12	-	-	0.23	23	223

Clinton Investment Management LLC (CIM), a SEC registered investment adviser, claims compliance with the Global Investment Performance Standards (GIPS®) and has prepared and presented this report in compliance with the GIPS standards. CIM has been independently verified for the periods May 31, 2007 through December 31, 2022. The verification report is available upon request. A firm that claims compliance with the GIPS standards must establish policies and procedures for complying with all the applicable requirements of the GIPS standards. Please review the firm's ADV for additional information about risks and fees.

Verification provides assurance on whether the firm's policies and procedures related to composite and pooled fund maintenance, as well as the calculation, presentation, and distribution of performance, have been designed in compliance with the GIPS standards and have been implemented on a firm-wide basis. Verification does not provide assurance on the accuracy of any specific performance report.

Notes

- CIM is an independent registered investment adviser. CIM was established in 2007 and primarily manages fixed income products for high-net-worth, ultra-high-net worth, and institutional clients.
- The Intermediate composite includes portfolios that invest in municipal bonds. The objective of the composite is to track and/or outperform the benchmark in any given cycle. This strategy is to enhance portfolio income/total returns that are similar to or higher than that of its benchmark, the Bloomberg Barclays Municipal 1-10 Year index. Other major statistical factors are considered when constructing portfolios but may not be primary constraints such as duration position, sector allocation, credit quality selection and bond structure. Leverage and derivatives are not used.
- The composite consists of fully discretionary, fee paying accounts under management, including terminated accounts for the period they were fee paying accounts. The composite's creation and inception date is *March 31, 2012.
- The US dollar is the currency used to express performance.
- The benchmark for the composite is the Bloomberg Barclays Municipal 1-10 Year Index which is a broad-based, total-return index comprised of approximately 30,941 investment grade issuers of fixed-rate securities with maturities between one and ten years. Please note an investor cannot invest directly in an index.
- Gross-of-fees performance returns represent returns prior to the deduction of management fees but after all trading expenses. Net-of-fees performance returns are calculated by deducting the actual investment management fee from the gross returns. Accounts may be charged additional advisory fees on top of CIM's investment management fee.
- The performance numbers include the reinvestment of income and capital gains

- Internal dispersion is calculated when five or more portfolios were in the composite for the entire year using the Gross asset-weighted standard deviation of those portfolios that were included in the composite for an entire year. The 3-Year Standard Deviation represents the annualized standard deviation of actual Gross composite and benchmark returns, using the rolling 36-months ended each year-end.
- Past performance is not indicative of future returns. Actual results may differ from the composite results depending upon the size of the account, investment objectives, guidelines and restrictions, inception of the account and other factors. Investments in the strategy carry risks, including possible loss of principal. Carefully consider the Strategy's investment objectives, risks, and expenses before investing. Certain information has been obtained from third-party sources believed to be reliable, but we cannot guarantee its accuracy or completeness.
- The fee schedule is: 0.60%. Investment advisory fees are negotiable based on account size, investment strategy and relationship type and may differ between accounts.
- Policies for valuing portfolios, calculating performance, and preparing GIPS Reports and a list of composite descriptions are available upon request.
- GIPS® is a registered trademark of CFA Institute. CFA Institute does not endorse or promote this organization, nor does it warrant the accuracy or quality of the content contained herein.

The investment strategies described herein are those of Clinton Investment Management. These materials are being provided for illustrative and informational purposes only. The information contained herein is obtained from multiple sources that are believed to be reliable. However, such information has not been verified, and may be different from the information included in documents and materials created by the sponsor firm in whose investment program a client participates. Some sponsor firms may require that these Clinton Investment Management materials are preceded or accompanied by investment profiles or other documents or materials prepared by such sponsor firms, which will be provided upon a client's request. For additional information, documents and/or materials, please speak to your Financial Advisor.

Contact us to find out how Clinton Investment Management exceeds expectations

One Canterbury Green | 201 Broad St | 8th Floor | Stamford, CT | 06901
203.276.6246 | contactus@clintoninvestment.com | www.clintoninvestment.com